

The  
Bond Timber  
Product Range



*Celebrating 20 years*



## Contents

	Page
30 Year Gold Standard Stakes	4-5
Gold Incised Sawn Posts	6
Bespoke Machined Posts	7
Timber Gates	7
National Highways SS4	8
Motorway and Rail Industry	9
Acoustic Fencing - Industrial	10
Acoustic Fencing - Domestic	11
Silver Standard Fencing	12
Purlins and Dungwalling	13
Construction Timbers	14
Cladding Range	15
Sheet Materials	16
Skirtings, Architraves, Doorlinings and PSE	16
Ironmongery	16
Decorative Garden Products and Privacy Lattice	17
Decking Products	18

## Accreditations

WH Bond & Sons Ltd are:

- BALI members
- Accredited by Constructionline
- A CHAS approved contractor

We are also a WPA BenchMark approved company recognising the quality of our preservative treatments. Through the WPA (Wood Protection Association) we are also one of the few companies in the UK recognised as an approved supplier of motorway timbers, meeting the UK Highways Agency 30 year service life requirements. We are one of a few UK companies that has this approval status.



Only the products that are identified as such on this document are FSC® certified.



## Committed to Sustainable Sourcing

All the timbers we use in our business are from sustainably managed sources that ensure consistent replantation programmes in our forestry resources. More trees are planted than are harvested.



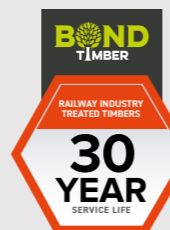
## A Choice of High Performance Fencing Timbers



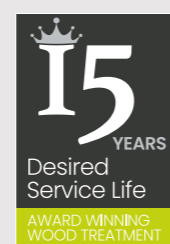
The Gold Standard range of fencing has been treated to achieve a 30 years service life. We offer agriculture stakes and fence posts as part of this range.



Fencing range with a minimum 30 year service life performance protection to meet the National Highways Sector Scheme 4 (NHSS 4) requirements.



These timbers are manufactured from redwood species, dried and treated to achieve a 30 year service life to meet strict rail industry requirements.



Silver Standard fence posts and components are preservative treated to a 15 year service life protection level.



Celebrating 20 years

**With a focus on quality, the Bond Timber business has grown from its agriculture roots to be one of the leading timber merchants in the South West.**

Right from the start Bond Timber committed to three core principles – investment in technology, continuous professional development for its people and the provision of customer service excellence. Whilst the business has changed dramatically over the past 20 years, these guiding principles have remained steadfast and allowed Bond Timber to grow.

From our three acre site in Trerulefoot, we treat and manufacture a variety of timber products, covering fencing for National Highways through to gates and garden furniture for the home.

WH Bond & Sons, a family farming business is founded by Mr William Hermon.

- 2003 Bake Sawmill is acquired by WH Bond & Sons in February 2003.
- 2006 The trading name Bake Sawmill is changed to Bond Timber.
- 2007 WH Bond & Sons celebrates 50 years in business.
- 2008 Installation of a Vacsol® low pressure wood treatment plant to work alongside the Tanalith® E high pressure wood treatment plant acquired with the business.
- 2009 The treatment facilities are expanded after the decision is made to invest in the very latest treatment facilities and adapt to be able to treat timber to high strength, National Highways Sector Scheme 4.
- 2016 Bond Timber win at the Wood Protection Association (WPA) Awards, including the Award for Quality of Excellence.
- 2016 Expansion of the site with extra 8400 ft of timber storage, and replacement of the low pressure treatment vessel with a larger facility expands Bond Timbers capacity further.
- 2017 The business achieves ISO14001:2015 accreditation and installs an Excalibur incising machine to compliment the treatment facilities. During 2017 the original high pressure treatment vessel is replaced with a new 40ft tilting vessel operated by Auto-Treater® plant control and management system.
- 2018 Bond Timber invest in an installation of a new 20ft tilting high pressure treatment vessel to expand the existing facilities and production capacity.
- 2019 Bond Timber win again at the Wood Protection Association (WPA) Awards, including the Award for Quality of Excellence.
- 2020 An ecommerce website and a web-based development app for trade customers are launched.
- 2022 Bond Timber install 100kwa solar panels to the sawmill buildings.



**30**  
YEARS  
Desired  
Service Life  
AWARD WINNING  
WOOD TREATMENT

# Gold Standard Stakes

**We are the only timber supplier in the country to offer a 30 year WPA Approved fencing stake\***

Our Gold Standard agricultural fencing stakes and strainers are manufactured exclusively from selected quality pine.

To provide a 30 year desired service life, we carefully dry the timber and preservative treat with Tanalith® E to our Gold Standard treatment procedures.

The Gold Standard treatment is set at double strength standard required to meet the Use Class 4 ground contact requirements of BS8417. The timber is in the treatment tank for up to 5 hours

to ensure the best possible quality.

This longer treatment cycle means that the treatment penetrates further into the timber, providing better protection from wood destroying organisms and ultimately extending the desired service life of the products.

In addition to peeled cundy fencing stakes we keep a wide range of Machined Round Pine Poles in 75mm, 100mm and 150mm diameters also treated to our Gold Standard.

*\*Correct at the time of publishing.*



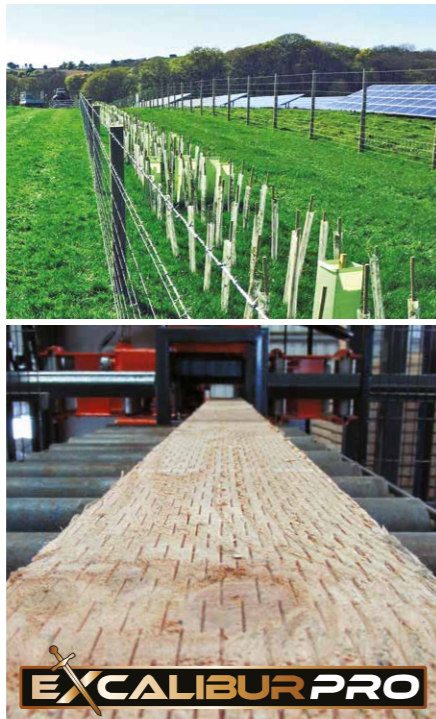
# 30 Year Stakes



SIZE	PRODUCT DESCRIPTION	LENGTHS
50/75mm	Pointed Cundy Stakes Gold	1.65m
50/75mm	Pointed Cundy Stakes Gold	2.4m
75/100mm	Pointed Cundy Stakes Gold	1.65m
75/100mm	Pointed Cundy Stakes Gold	1.8m
75/100mm	Pointed Cundy Stakes Gold	2.1m
75/100mm	Pointed Cundy Stakes Gold	2.4m
100/125mm	Pointed Cundy Stakes Gold	1.65m
100/125mm	Pointed Cundy Stakes Gold	1.8m
100/125mm	Pointed Cundy Stakes Gold	2.1m
100/125mm	Pointed Cundy Stakes Gold	2.4m
100/125mm	Pointed Cundy Stakes Gold	2.7m
125/150mm	Pointed Cundy Stakes Gold	2.1m
125/150mm	Pointed Cundy Stakes Gold	2.4m
150/175mm	Pointed Cundy Stakes Gold	2.1m
150/175mm	Pointed Cundy Stakes Gold	2.4m
150/175mm	Pointed Cundy Stakes Gold	3.0m
175/200mm	Pointed Cundy Stakes Gold	2.4m
75mm	Machine Round Tree Stakes UC4	2.4m



**30**  
YEARS  
Desired  
Service Life  
AWARD WINNING  
WOOD TREATMENT



# Gold Incised Sawn Posts

SIZE	PRODUCT DESCRIPTION	LENGTHS
Ex 75 x 75mm	Incised Treated Post Gold	various
Ex 75 x 100mm	Incised Treated Post Gold	various
Ex 75 x 125mm	Incised Treated Post Gold	various
Ex 75 x 150mm	Incised Treated Post Gold	various
Ex 100 x 100mm	Incised Treated Post Gold	various
Ex 125 x 125mm	Incised Treated Post Gold	various
Ex 150 x 150mm	Incised Treated Post Gold	various
Ex 175 x 175mm	Incised Treated Post Gold	various
Ex 200 x 200mm	Incised Treated Post Gold	various
Other sizes available to order, please contact us to discuss		

Before being pressure treated to our Gold Standard (see page 4), the redwood timber posts are surface incised. Mechanical incising allows for a deeper penetration of the Tanalith® E wood preservative into the timber, providing a 30 year service life. Our Gold incised sawn posts are especially suited to agricultural applications.



# Bespoke Machined Posts



**15**  
YEARS  
Desired  
Service Life  
AWARD WINNING  
WOOD TREATMENT



At Bond Timber we have the facilities to point weather posts to your desired finish, this could be pointed one, two or four ways. We can also offer chamfered and rounded top posts machined to order. In addition to our treated softwood posts we keep a variety of Sawn Oak posts in stock.

# Timber Gates

Our gates are available in a range of designs to suit a variety of urban and rural areas. To ensure long term performance, the timbers are pressure treated to a 15 year service life. We also keep pedestrian gates and complete ironmongery in stock, visit [www.bondtimber.co.uk](http://www.bondtimber.co.uk) to view our stocked range.

GATES
Universal Sawn Diamond Brace Gate Available widths: 1.2m 1.5m 1.8m 2.1m 2.4m 2.7m 3.0m 3.3m 3.6m
Universal Planed Diamond Brace Gate Available widths: 3ft, 4ft, 5ft, 6ft, 7ft, 8ft, 9ft, 10ft, 11ft, 12ft



SIZE	PRODUCT DESCRIPTION	LENGTHS
Ex 75 x 75mm	Incised Treated Post Gold	various
Ex 75 x 100mm	Incised Treated Post Gold	various
Ex 75 x 125mm	Incised Treated Post Gold	various
Ex 75 x 150mm	Incised Treated Post Gold	various
Ex 100 x 100mm	Incised Treated Post Gold	various
Ex 125 x 125mm	Incised Treated Post Gold	various
Ex 150 x 150mm	Incised Treated Post Gold	various
Ex 175 x 175mm	Incised Treated Post Gold	various
Ex 200 x 200mm	Incised Treated Post Gold	various
38 x 88mm	Fencing Rails	various
38 x 100mm	Fencing Rails	various
38 x 150mm	Fencing Rails	various
50 x 100mm	Fencing Rails	various
50 x 150mm	Fencing Rails	various

# National Highways SS4

For fencing timbers used on motorway and highway projects, the UK Highways Agency insists on a minimum 30 year service life performance protection to meet the National Highways Sector Scheme 4 (NHSS 4) requirements. As a fencing supplier there is a strict registration and quality approval procedure through the UK Wood Protection Association (WPA) to become an approved fencing supplier to these markets.

We are one of a few companies in the UK that has this approval status. Our ISO 9001 quality status as a business is also part of this approval.

We have supplied timbers to many motorway and highway projects as well as rail industry projects which demand similar quality standards to NHSS 4.



# Motorway & Rail Industry

These include the following:

- Post and rail fencing
- Morticed post and rail fencing
- Fencing stakes and strainers
- Machine round timbers
- Timber panelling
- Stiles
- Components for bridges and walkways
- Landscaping timbers
- Timber gates
- Bespoke posts and rails machined to set profiles

Bespoke sizes and profiles of components are produced for these industrial projects and then preservative treated to meet the 30 year service life specification.





# Acoustic Fencing - Industrial



1



2



3

## Warrior Fencing

In partnership with BSW Timber we offer the Warrior range of three acoustic fencing systems.

Independently tested in accordance with BSEN1792-2:2012 for sound insulation the system achieves a noise reduction of up to 34dB (DLr). This performance classes the system as a category B3-rated noise barrier in accordance with Highways Agency specifications for motorways.

**Warrior Single Sided Reflective Panels** provide a high performing cost-effective solution, with an anti-climb design, ideal for domestic, commercial and industrial projects.

1. Warrior Single Sided Reflective Panels
2. Warrior Double Sided Reflective Panels
3. Warrior Absorptive Panels

Popular for industrial and commercial applications, **Warrior Double Sided Reflective Panels** perform to B3 rating. Achieving up to 47dB sound reduction the system reflects noise on both sides of the barrier.

**Warrior Absorptive** is a dual faced system that provides enhanced reflective and sound insulation on one side and sound absorption on the other.

With up to 44dB sound reduction, the panels are Category B3 rated for sound insulation and category A3 for sound absorption.

All our acoustic range of components are pressure treated to a 30 year desired service life in accordance with stringent National Highways Sector Scheme (NHSS) Sector 4 requirements.

## Available Sizes

The full Warrior range is available in a wide variety of standard modular heights:

HEIGHT MM	WIDTH MM	POST CENTRES MM	PANEL PARTS	HEIGHT MM	WIDTH MM	POST CENTRES MM	PANEL PARTS
1047	3005	3020	1	4347	3005	3020	2
1347	3005	3020	1	4947	3005	3020	2
1647	3005	3020	1	5547	3005	3020	2 or 3
1947	3005	3020	1	6147	3005	3020	3
2247	3005	3020	1	6747	3005	3020	3
2547	3005	3020	1	7347	3005	3020	3
3147	3005	3020	1 or 2	7947	3005	3020	3
3747	3005	3020	1 or 2	8547	3005	3020	3



# Acoustic Fencing - Domestic



## Soundshield Fencing

For when noise pollution is an issue for homeowners, the Soundshield range of acoustic fencing systems offers an ideal solution.

Whether you want to reduce intrusive traffic noise or minimise the impact of noisy neighbours, Soundshield reduces noise pollution levels through sound reflection, protecting your garden environments from the noise sources.

Soundshield acoustic fencing has been independently tested in a laboratory to BSEN1793-2 (2012), achieving a noise reduction of up to 37dB (DLr) and an average reduction of 22 dB (DLr). This performance classes the system as a category B2-rated noise barrier.

We offer the Soundshield range in partnership with BSW Timber.

Domestic size:

HEIGHT MM	WIDTH MM
1829	1830



**15** YEARS  
Desired Service Life  
AWARD WINNING WOOD TREATMENT

# Silver Standard Fencing

## 15 Year Service Life Fencing Range

There are occasions where the highest performance specification fencing may not be required for a particular project. We offer our Silver Standard fence posts and components which are preservative treated to a 15 year service life protection level.

We have a full range of Silver Standard treated fencing products. All these timbers can be upgraded if required to a higher specification 30 year service life.



SILVER STANDARD FENCING PRODUCTS		
COMPONENT	SIZE	LENGTHS (M)
Featheredge	150mm	1.2, 1.65, 1.8, 2.4
Close Boards	19 x 100mm	1.8
Rounded pickets	25 x 75mm	0.9, 1.2, 1.8
Posts	75 x 75mm	1.2, 1.5, 1.8, 2.1, 2.4, 3.0, 3.6
	75 x 125mm	1.2, 2.1, 2.4
	75 x 150mm	1.2, 2.1, 2.4
	100 x 100mm	1.2, 1.5, 1.8, 2.1, 2.4, 3.0, 3.6
Gate Posts	125 x 125mm	2.4, 3.0, 3.6
	150 x 150mm	2.4, 3.0, 3.6
	175 x 175mm	2.4, 3.0, 3.6
	200 x 200mm	2.4, 3.0, 3.6
Rails	38 x 88mm	
	38 x 100mm	
	47 x 100mm	
Overlap Panels and Trellis	6ft x 1ft	Up to 6ft x 6ft



# Purlins & Dungwalling

At Bond Timber we have a selection of purlins and agricultural dungwalling in stock. Timber purlins are strength graded depending on section size and load requirement.

Dungwalling, also known as stockwalling, is machined at the sawmill by our team and pressure treated with Tanalith® E wood preservative.

### PURLIN STOCK SIZES

- 75 x 100mm x 4.57m
- 75 x 100mm x 4.8m
- 75 x 100mm x 6.1m
- 75 x 125mm x 4.57m
- 75 x 125mm x 4.8m
- 75 x 125mm x 6.1m
- 75 x 150mm x 4.57m
- 75 x 150mm x 4.8m
- 75 x 150mm x 6.1m
- 75 x 175m x 4.57m
- 75 x 175mm x 4.8m
- 75 x 175mm x 6.1m
- 75 x 225mm x 4.57m
- 75 x 225mm x 4.8m
- 75 x 225mm x 6.1m



### DUNGWALLING (ALSO KNOWN AS STOCKWALLING)

- 47 x 200mm x 4.57m
- 47 x 200mm x 4.8m
- 47 x 200mm x 6.1m



Timber can be ordered in pack or loose quantities delivered direct to site with mechanical off load.



# Construction Timbers

At Bond Timber we keep a huge range of C16 & C24 graded construction timber in stock. The majority of stock is available kiln dried and regularised with a wide selection of various lengths stock. All carcassing is available to buy high pressure treated (Tanalith® E), low pressure treated (Vascol® Aqua 6118) or untreated.

**Section sizes available:**

47 x 50mm	up to 47 x 300mm
75 x 75mm	up to 75 x 300mm
100 x 100mm	up to 100 x 300mm



Lengths stocked range from 2.4m up to 7.8m with the facilities to cut, plane and machine on site.

We can also offer bespoke firrings and arris rails.



Vascol® Aqua 6118 is a water-based, metal free low pressure wood preservative treatment with BPR (Biocidal Products Regulation) authorisation. Vascol® provides an effective 'envelope' of long-term protection against fungal and insect attack around general building timbers and joinery components. It is used to treat timbers in Use Class 1, 2 and 3.1 (coated). At Bond Timber we add a yellow colour marker to easily identify our Vascol® treated timbers.



Bond Timber is a leading supplier of timber claddings and proud to be a Timber Decking & Cladding Association accredited supplier. On site at Saltash, Bond Timber have a four head moulder planer and have the skilled team employed to be able to machine a wide variety of sizes and species suitable for cladding. In addition to the machined timber, we are able to supply you with a selection of fixings suitable for your chosen cladding product.

**Western Red Cedar**

Imported Canadian Western Red Cedar is an extremely popular choice for timber cladding due to being an extremely stable timber with very low shrinkage factor, it is also naturally resistant to decay and insect attack.

Shiplap, T,G & V and shadow gap profiles are available from Bond Timber as well as all trims and sawn or planed fascia/soffit boards as required. Western Red Cedar is also available in shingles.

**Scandinavian Vth Redwood**

We also have a wide range of treated and untreated Scandinavian redwood cladding in shiplap and tgv.

**Siberian Larch**

It has a consistent creamy yellow brown colour and is slow grown with a tight straight grain. Siberian Larch has a live tight intergrown knot formation and it contains a natural fungicide called arabinoglactan. When exposed to rain and sunlight, Siberian Larch will go an attractive silver grey colour. It is a tough timber, dense, resinous and very stable in use when dry. In the UK it is the most durable commercially available softwood species making it suitable for other applications such as decking as well as timber cladding. Our Siberian Larch cladding timbers can be high pressure treated with Tanalith® E for protection against wood decay and insect attack.



**Homegrown Cladding**

Bond Timber offer a range of locally grown timbers suitable for cladding including Douglas Fir, English Larch, English Cedar and English oak. Please contact the team to discuss your requirements and they can confirm a quotation for you. Composite and Fibre Cement cladding also available, contact the team for further information.





# Sheet Materials



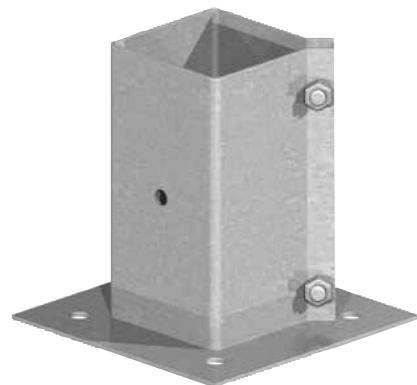
Stock sheet materials include:  
 3.6mm, 5.5mm, 9mm, 12mm, 18mm & 25mm Far  
 Eastern & Chinese Hardwood Plywood  
 9mm, 12mm & 18mm Shuttering Plywood  
 12 & 18mm Marine Plywood  
 9mm, 11mm and 18mm OSB & T&G OSB  
 18mm & 22mm Chipboard T&G Flooring  
 MDF, Birch and Formwork Plywood  
 Check our [www.bondtimber.co.uk](http://www.bondtimber.co.uk) for the latest range  
 available.

# Skirtings, Architraves, Doorlinings and PSE



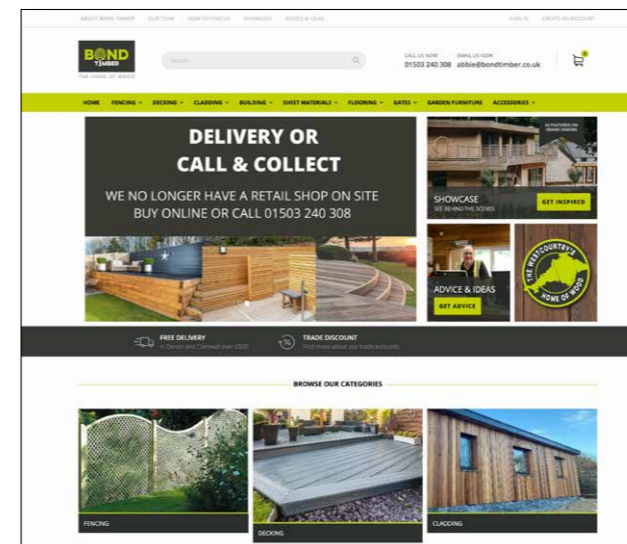
We keep a wide range of material  
 in stock including joinery which we  
 can machine in house. Contact the  
 team for further details, or visit  
[www.bondtimber.co.uk](http://www.bondtimber.co.uk)

# Ironmongery



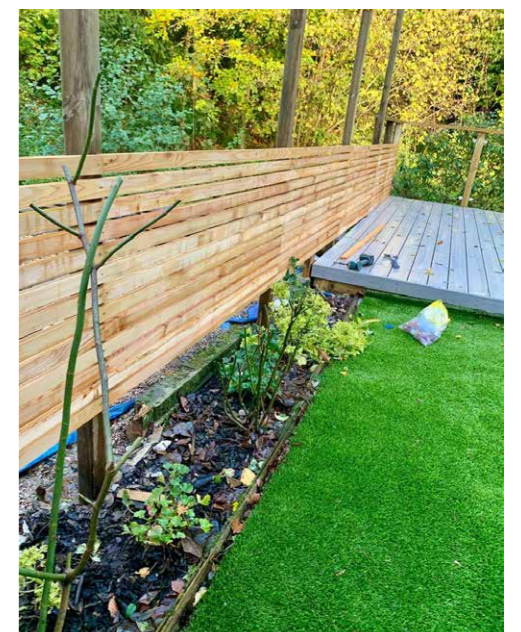
# Decorative Garden Products & Privacy Lattice

To see our latest range of garden products available, please visit  
 our website [www.bondtimber.co.uk](http://www.bondtimber.co.uk) where you can find a selection  
 of photos, sizes and product information. This includes softwood  
 sleepers, picnic tables, privacy lattice and much more!



visit our website

[www.bondtimber.co.uk](http://www.bondtimber.co.uk)



# Decking Products

Decks can be a practical, attractive addition to your outdoor landscapes. Decking can also help improve your outside space by creating a totally level area for entertaining, relaxing or play. Bond Timber offer a range of decking products to suit your needs.

## Softwood Decking

All our softwood decking is pressure treated with Tanalith® E for long-term protection against wood decay and insect attack.



### PREMIUM PRESSURE TREATED SOFTWOOD DECKING

Ex 32 x 125mm  
Grooved deck boards, FSC® Certified, Scandinavian Redwood  
Available in lengths:  
2.4m 3.6m 4.2m 4.8m 5.4m



### ANTI-SLIP PRESSURE TREATED DECKING

Ex 32 x 125mm  
Deck boards with anti-slip aggregate strips, FSC® Certified, Scandinavian Redwood  
Available in lengths:  
4.8m



## Hardwood Decking

Yellow Balau Decking is a very durable hardwood and one of the most popular species in the UK for hardwood decking. It is a hard, heavy and strong timber well suited to decking construction. Please note some colour variation is to be expected within Yellow Balau and is part of the characteristic appeal of this product.

### YELLOW BALAU HARDWOOD DECKING

21 x 145mm finished product  
Castle/Smooth Profile, Reversible deck boards  
Available in approximate random lengths:  
8 ft, 9 ft, 10 ft, 11 ft, 12 ft, and 14 ft



### Alternative Hardwoods

We are able to offer a selection of alternative hardwoods to order. These include Oak and Greenheart.

## Composite Decking

Composite decking has grown in popularity over the past few years. Bond Timber offer 4 options:

### EVA-LAST COMPOSITE DECKING, APEX GROOVED

24mm x 140mm x 4.8m  
Ultra low-maintenance, made using solar energy, high performing bamboo & cellular PVC.



### MILLBOARD SOLID CORE COMPOSITE

Please ask for sizes.  
Enhanced Grain, Weathered Oak and Lasta-Grip.  
20 year guarantee. Highly slip resistant.



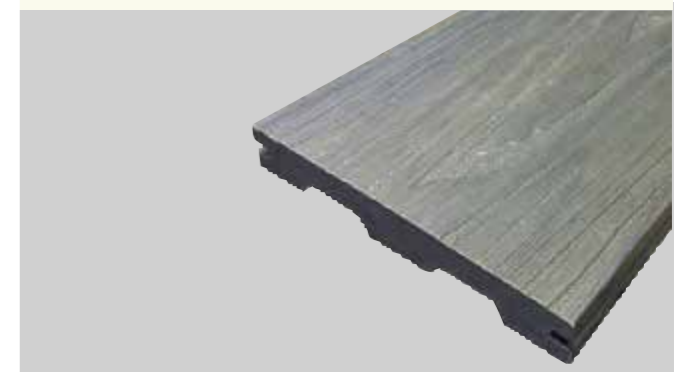
### HABITAT+ SOLID CORE COMPOSITE

22mm x 135mm x 3.6m  
Reversible deck boards made from 100% recycled materials. 20 year guarantee. Choice of 3 colours.



### URBAN SOLID CORE COMPOSITE

22mm x 135mm x 3.6m  
Reversible deck boards made from 100% recycled materials. 20 year guarantee. Choice of 3 colours.



## IRO Decking

Each and every piece of IRO architectural timber is crafted using an intricate seven-step process that combines an eye for detail with the latest timbertechology. The result is a beautiful, unique product that adds charm and character to a range of spaces. Created using the traditional Japanese method of Yakisugi, IRO is available in a range of 10 colours to complement every environment.

### IRO DECKING

32mm x 150mm x 4.8m



Happy you,  
Happy me...



To order call the sales team, arrange a sales visit or order online at [www.bondtimber.co.uk](http://www.bondtimber.co.uk)

All trade and retail customers welcome.

Please note we no longer operate a retail shop on site. We offer a delivery or pre-arranged collection service only.

**SHOP  
ONLINE**



**BOND**  
TIMBER

Bond Timber, Bake Sawmill, Trerulefoot, Saltash, Cornwall PL12 5BW.

☎ 01503 240 308

[sales@bondtimber.co.uk](mailto:sales@bondtimber.co.uk)

[www.bondtimber.co.uk](http://www.bondtimber.co.uk)

Bond Timber is part of WH Bond & Sons Ltd.